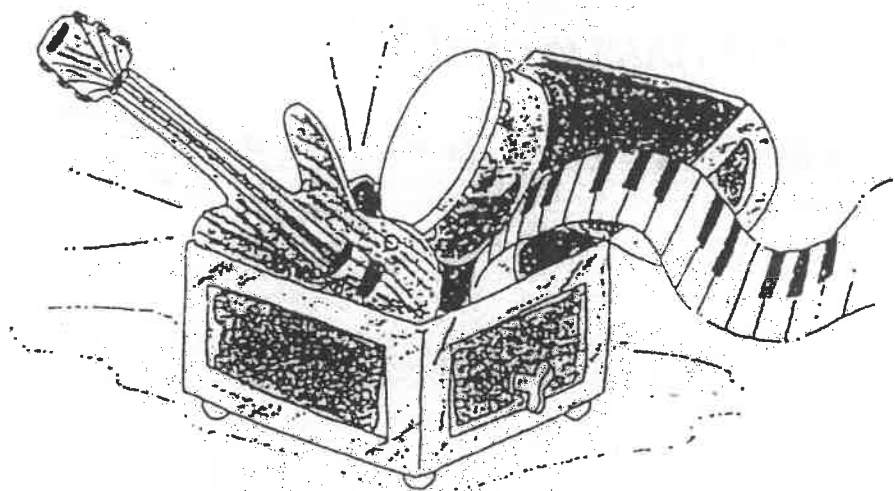


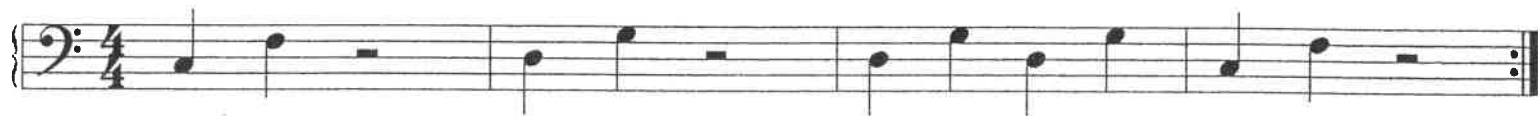
PREP MIXED BAND BOOK



?:
BASS

THIS BOOK BELONGS TO

The Addams Family
(Easy)



The Addams Family
(Advanced)



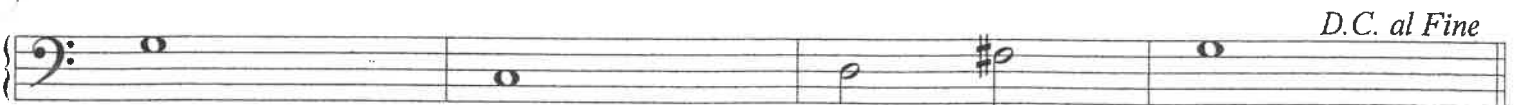
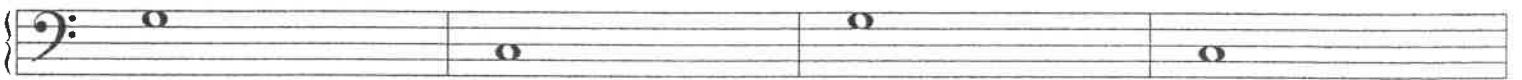
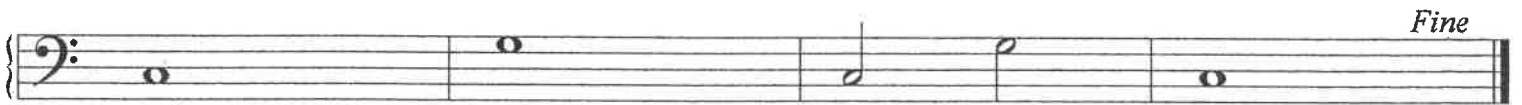
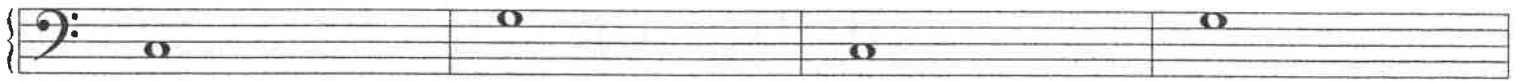
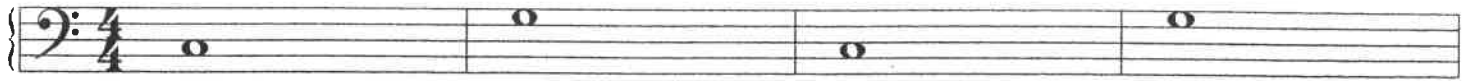
Batter up (Easy)

Four staves of musical notation in bass clef, 3/4 time signature. The first staff contains four quarter notes. The second, third, and fourth staves each contain four half notes, one per measure.

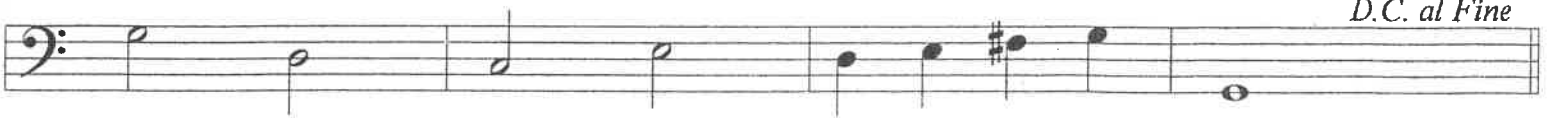
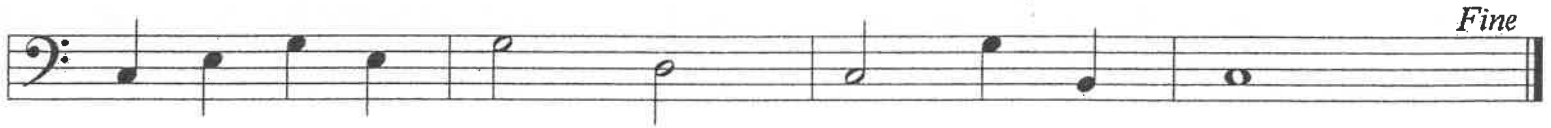
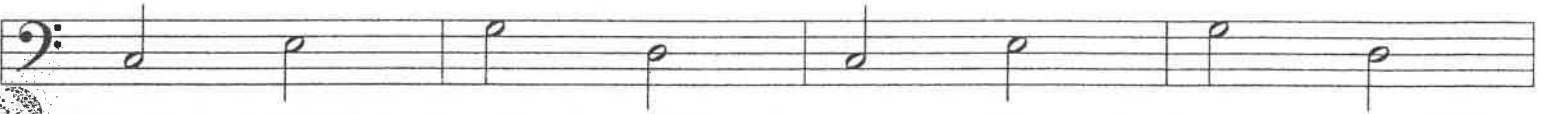
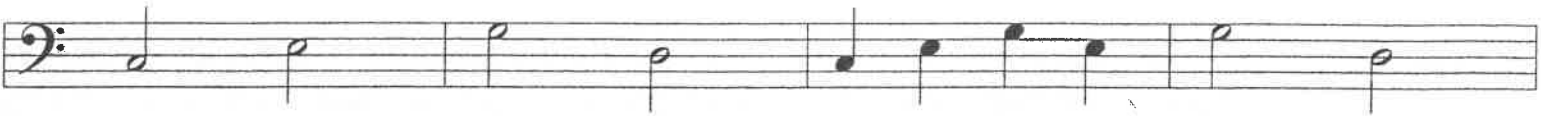
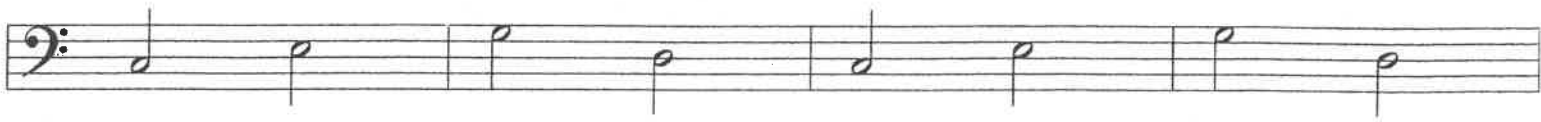
Batter up (Advanced)

Four staves of musical notation in bass clef. The first staff contains four eighth notes beamed in pairs. The second, third, and fourth staves each contain four quarter notes, one per measure.

Charlie The Chimp (Easy)



Charlie The Chimp (Advanced)



The Donkey (Easy)

Three staves of musical notation for the 'Easy' version of 'The Donkey'. The first staff begins with a bass clef and a 4/4 time signature. The melody consists of quarter notes in the first two measures, followed by half notes in the next two measures, and quarter notes in the final two measures. The second and third staves continue the melody with the same rhythmic and pitch patterns.

The Donkey (Advanced)

Three staves of musical notation for the 'Advanced' version of 'The Donkey'. The first staff begins with a bass clef and a 4/4 time signature. The melody is more complex, featuring eighth notes in the first two measures, quarter notes in the next two measures, and quarter notes with eighth notes in the final two measures. The second and third staves continue the melody with the same rhythmic and pitch patterns.

The Kick Off (Easy)

Four staves of musical notation for 'The Kick Off (Easy)'. The first staff is in bass clef with a 3/4 time signature and contains four quarter notes. The second staff contains four half notes. The third staff contains four quarter notes. The fourth staff contains four half notes. The piece concludes with a double bar line.

The Kick Off (Advanced)

Four staves of musical notation for 'The Kick Off (Advanced)'. The first staff contains a sequence of eighth notes. The second staff contains a sequence of half notes. The third staff contains a sequence of quarter notes. The fourth staff contains a sequence of half notes. The piece concludes with a double bar line.

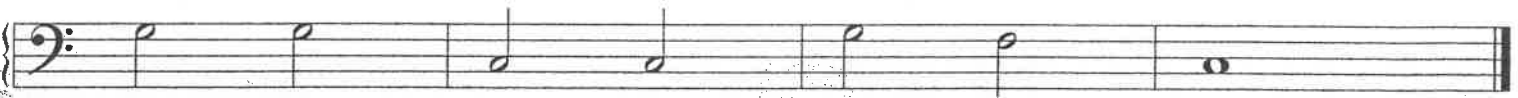
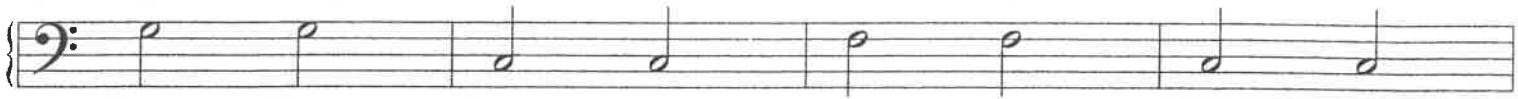
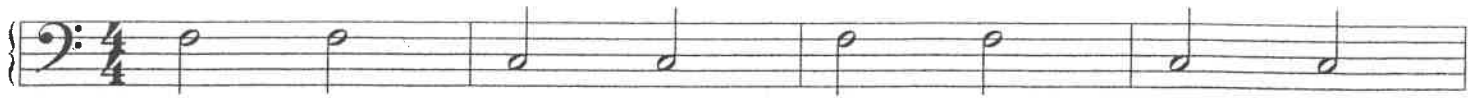
Join The Fun (Easy)

Four staves of musical notation for the 'Easy' version of 'Join The Fun'. The first staff includes a bass clef and a 4/4 time signature. The melody consists of quarter notes and half notes across four measures.

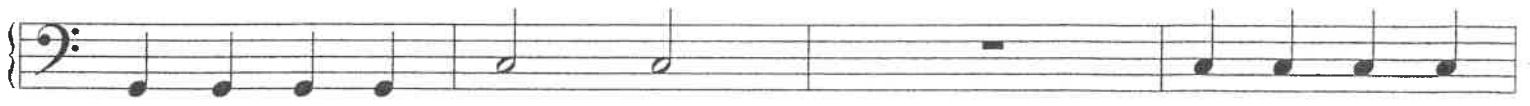
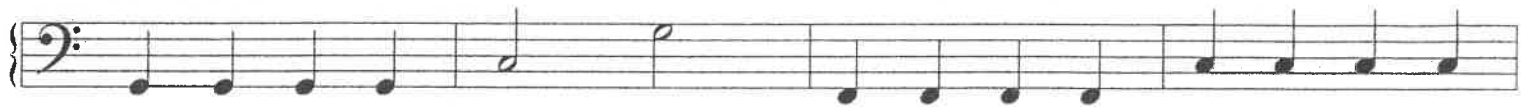
Join The Fun (Advanced)

Four staves of musical notation for the 'Advanced' version of 'Join The Fun'. The melody is more complex, featuring eighth notes, sixteenth notes, and triplets. The first staff includes a bass clef. The piece concludes with a double bar line on the fourth staff.

La Bamba (Easy)



La Bamba (Advanced)



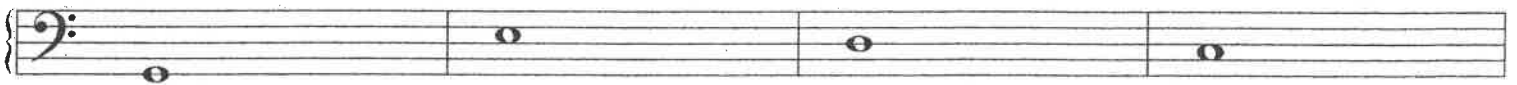
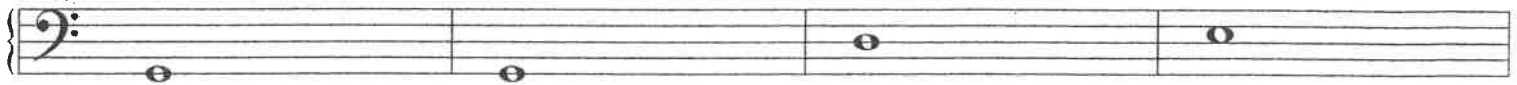
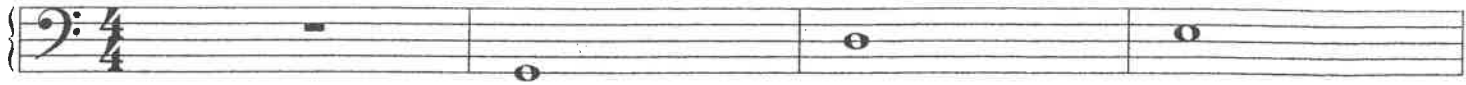
Lean on Me (Easy)

Musical score for the 'Easy' version of 'Lean on Me'. It consists of four staves of music in bass clef, 4/4 time. The first staff begins with a treble clef and a 4/4 time signature. The melody is simple, using quarter and half notes. The accompaniment consists of a steady bass line of quarter notes. The piece concludes with a double bar line.

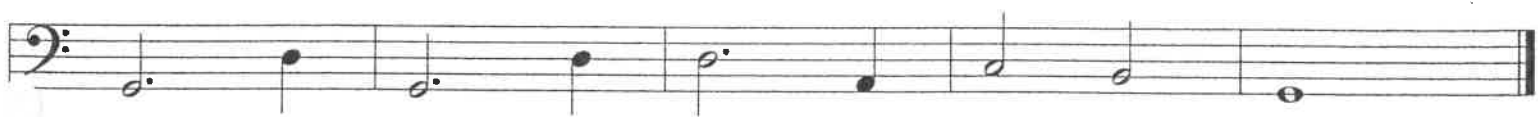
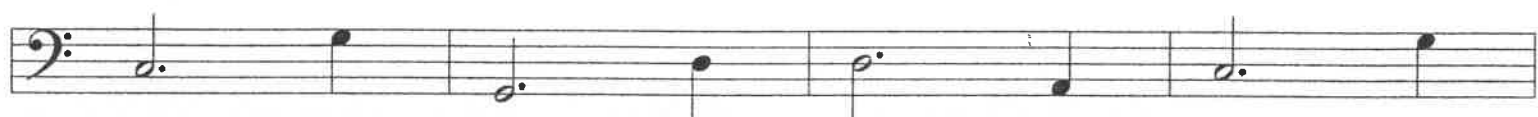
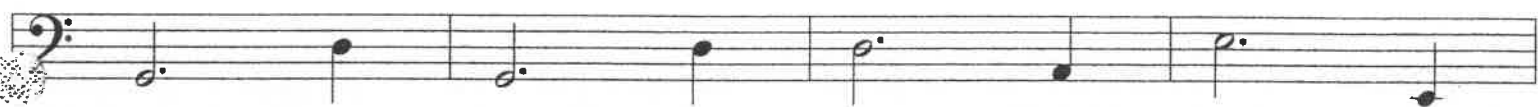
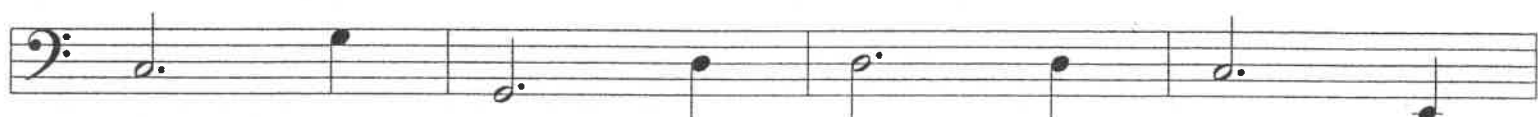
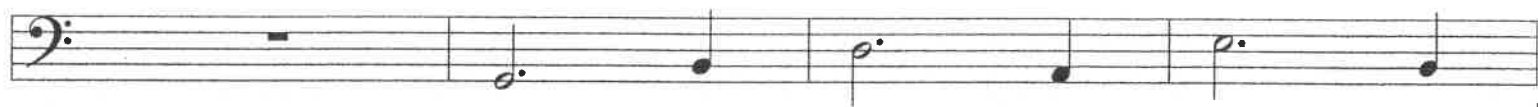
Lean on Me (Advanced)

Musical score for the 'Advanced' version of 'Lean on Me'. It consists of four staves of music in bass clef. The melody is more complex, featuring eighth and sixteenth notes. The accompaniment is more intricate, with a bass line that includes eighth and sixteenth notes. The piece concludes with a double bar line.

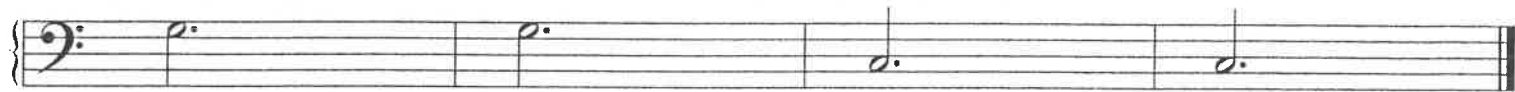
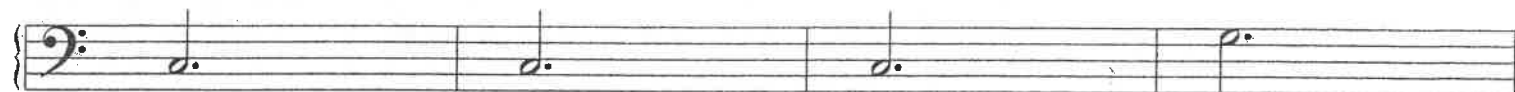
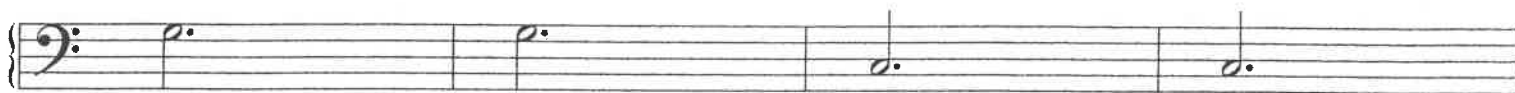
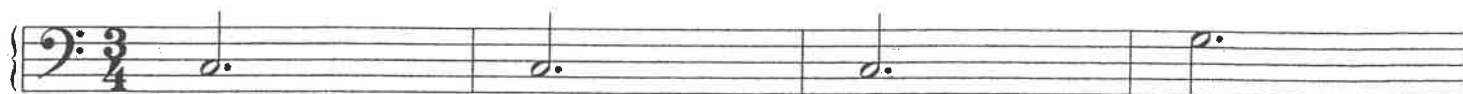
Let It Be (Easy)



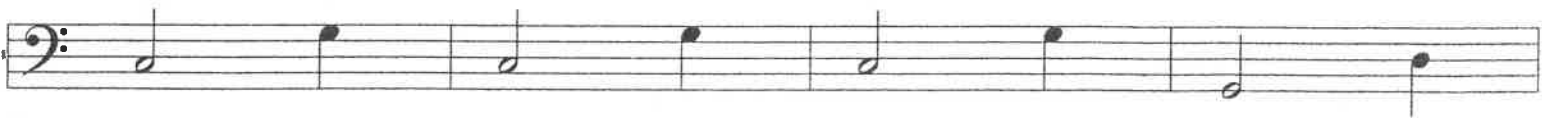
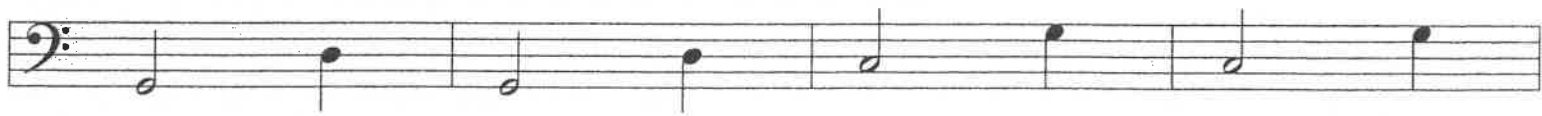
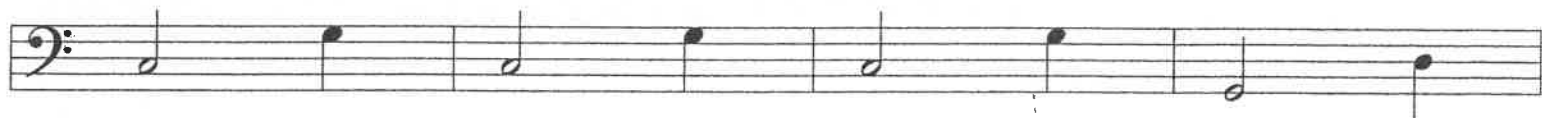
Let It Be (Advanced)



Skating (Easy)



Skating (Advanced)



Warrior Dance (Easy)

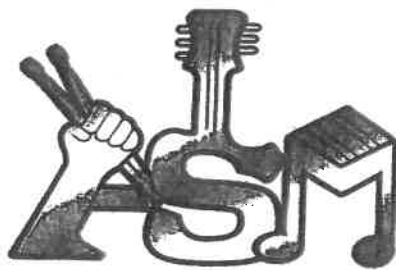
The 'Warrior Dance (Easy)' piece is written in 4/4 time and consists of four staves of music. The first staff begins with a bass clef and a 4/4 time signature. The melody is simple, using quarter and eighth notes. The second staff ends with the instruction 'Fine'. The third staff continues the melody. The fourth staff ends with the instruction 'D.C. al Fine'.

Warrior Dance (Advanced)

The 'Warrior Dance (Advanced)' piece is written in 4/4 time and consists of four staves of music. The first staff begins with a bass clef and a 4/4 time signature. The melody is more complex, featuring eighth and sixteenth notes. The second staff ends with the instruction 'Fine'. The third staff continues the melody. The fourth staff ends with the instruction 'D.C. al Fine'.

PREP MIXED BANDS

COOPER CITY	MONDAY	5:00pm - 6:00pm
	WEDNESDAY	6:00pm - 7:00pm
	SATURDAY	12:00pm - 1:00pm
Pre-Prep*	FRIDAY	5:00pm - 6:00pm



ASM MUSIC SCHOOLS